



NEOGENESIS

English Catalogue

NeoGenesis Co., Ltd

Address #302, E&C Dream Tower, 146, Seonyu-ro, Yeongdeungpo-gu, Seoul, South Korea (07255)

Tel +82-2-583-1348 **Fax** +82-2-2038-0848 **E-mail** info@neogenesis.co.kr

Website www.neogenesis.co.kr

www.neogenesis.co.kr

| NEOGENESIS

| | |
|----------------------|---|
| Company | NeoGenesis Co., Ltd |
| CEO | Yongpil Kim |
| Establishment | 16.Oct.2012 |
| Core Business | R&D / PR & Marketing / Export & Sales of Medical Devices in Autologous Cell Therapy |
| Address | #302, E&C Dream Tower, 146, Seonyu-ro, Yeongdeungpo-gu, Seoul, South Korea (07255) |
| E-Mail | info@neogenesis.co.kr |
| Tel | +82-2-583-1348 |
| Fax | +82-2-2083-0848 |

| Global Network



NeoGenesis is a global leader enterprise, taking a leap towards the global market with expertise and technology in medical devices for autologous cell therapy.

| Brand Story

**‘Regeneration of Biological Tissue’
Leading a Healthy and Beautiful Life**

NEOGENESIS

**The Self-healing Ability
Attention to Mysteries of the Human Body**

Our body has the power of ‘self-healing’ to regenerate and heal damaged tissues from external factors, returning to a healthy original state.

NEOGENESIS focused on the essential recovery system of the human body.

We are searching for the secret of fundamental health from the mysteries of human birth and its phenomenal vitality.

**The Beginning of Autologous Cell Therapy
Leading the Global Medical Health Industry**

Just as our amazing body was created by multi-differentiation from a single stem cell,

NEOGENESIS also leaped as a global company that provides a variety of cutting-edge medical devices, starting with the development of ‘UNISTATION™’, the very first all-in-one device for stem cell isolation.

We are contributing to the world’s medical health industry with our expertise in stem cell and autologous cell therapy.

**The Healthy Vitality of Natural Skin
Regenerating the True Beauty of Human**

The purity and freshness of the beginning and our original state are the standards of genuine beauty that we pursue.

NEOGENESIS developed advanced biocompatible materials to provide medical aesthetics solutions as well for ‘promoting self-renewal of skin’ and ‘anti-aging’.

We are realizing a new beauty that turns back the skin’s clock through continuous research on the vital force of the human body.

**The Power of Healthy Beauty
Presenting a Better Tomorrow**

Experience the uniqueness full of inner health and outer beauty with NEOGENESIS.

| TABLE OF CONTENTS

| | | |
|-----------------|---------------------------------|----|
| Introduction | NeoGenesis | 2 |
| | Global Network | |
| | Brand Story | 3 |
| Cell Therapy | Unistation 2 nd Ver. | 6 |
| | Centrifuge Series | 8 |
| | PRP Kit Series | 10 |
| | PRP Activator | 12 |
| | Plasma Gel | 13 |
| | Luna-Stem | 14 |
| | | |
| Aesthetics | NEO Thread Series | 16 |
| | Regenovue Filler Series | 20 |
| | Regenovue Aqua Shine Series | 22 |
| | Regenovue PN Series | 24 |
| | NEO Needle Series | 26 |
| | Neobella | 28 |
| | LeFil Injector | 29 |
| | Spotless | 30 |
| | | |
| Pharmaceuticals | NEO Anesthetic Cream Series | 32 |
| | Neotox | 34 |
| Cosmetics | | |
| | Beta-Glucan Recovery Series | 36 |
| | Riox Mask | 38 |

CELL THERAPY

- Unistation 2nd Ver.
- Centrifuge Series
- PRP Kit Series
- PRP Activator
- Plasma Gel
- Luna-Stem

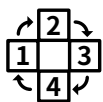


UNISTATION 2nd VER.



Compact “All-In-One” for Stem Cell Isolation: Centrifuge + Incubator + Shaker

Dramatically Increase Fat Survival Rate of Lipotransfer from 30% up to 74%



Simple Steps

Easy ADSC extraction protocol with 1 button & 4 steps



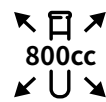
Superior Results

Concentrate up to 62% more ADSC than its competitors



Safety Ensured

Closed system with silicon heating incubator for safety



Large Capacity

Process maximum of 800cc fat at once in only 50 mins



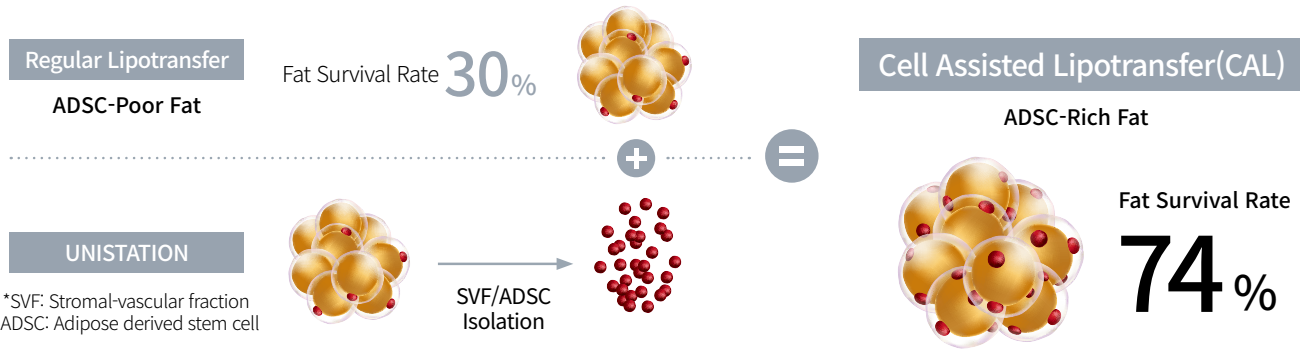
Less Consumables

Low consumable expense for reasonable treatment cost

Cell-Assisted Lipotransfer(CAL)

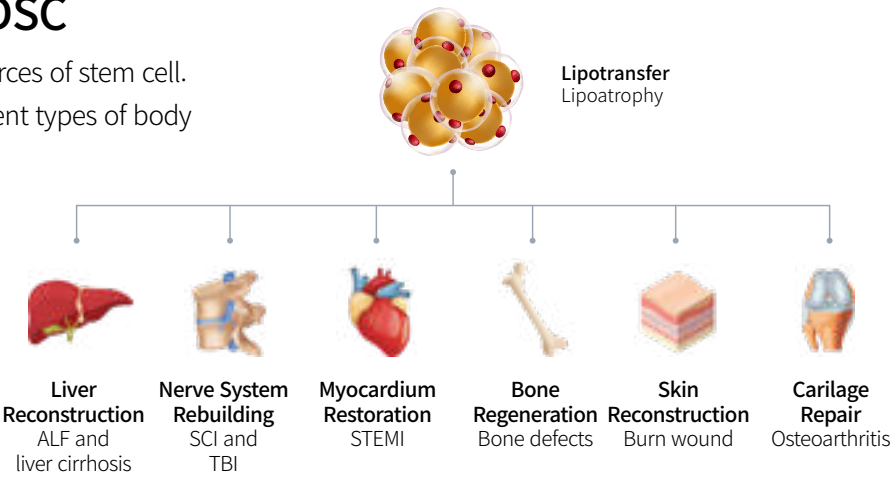
Adding isolated SVF to the same amount of aspirated fat increases the survival rate by average of 230%.

UNISTATION is optimized for extracting Stromal-vascular fraction(SVF) and Adipose-derived stem cell(ADSC) with ease.



Application Area of ADSC

Adipose tissue is one of the richest sources of stem cell. Stem cell can multi-diversify into different types of body tissue and is considered as the key factor of future medical industry treating incurable diseases.



Components

Centrifuge
Max. 800cc capacity (50cc syringe x 16ea)

Incubator
Keeps steady 37°C (Stable Silicon Heater)

Shaker
Max. 400cc capacity (50cc syringe x 8ea)

UNIKIT
50cc Syringe Kit (Consumable)

Specification

| | |
|---------------------------|-------------------------------|
| Max. RPM/RCF (Swing out) | 3,600rpm / 2,898xg |
| Max. Capacity | 800cc (50cc x 4 x 4) |
| Temp. Range | Room temperature ~ +40°C |
| Noise Level | ≤60dB |
| Acc / Dec | 9 / 10 Steps |
| Program Memory | 100 |
| Display | Blue LCD screen / Touch pad |
| Power Supply | 230V/ 50~60Hz (110V Optional) |
| Power Requirement | 1.5kVA |
| Dimension (W x D x H) | 540 x 650 x 380mm |
| Weight (Body / Accessory) | 58.5kg / 6~11kg |

Function _ Pre-warm up, Time control, RPM/RCF conversion, Imbalance cutout, Safety lid lock, Lid drop protection, Auto lid release at completion

NEOGENESIS CENTRIFUGE SERIES



“Bench-Top” Centrifuge with Strong Durability and Smart Functions

Max Capacity of 400ml & 4,000rpm for Clinic & Lab Operations



Smart Functions

Auto-lid control and alarm for imbalance, over speed & heat



10 Protocols

Simple one-button operation for 10 programmable protocols



Soft-Spin Key

Gentle acceleration & deceleration mode for delicate samples



Comfort Use

Low noise and heat by anti-vibration and air-flow lid structure



Biosafety Lv.2

Aerosol-tight bucket & rotor meets WHO's biosafety level 2

GENESIS CENTRIFUGE

“Swing-Type” for general usage compatible with all tube sizes

- Max capacity: 400ml (100ml x 4)



Compatibility

Original Edition _ Neo(10cc), Genesis(15cc), Pure(20cc) PRP Kit + Conical Tube(15cc & 50cc)

Special Edition _ Original Edition + Cure(30cc) & Omni(60cc) PRP Kit

Specification

| | |
|---------------------------|----------------------------------|
| Max. RPM/RCF (Swing Out) | 4,000rpm / 2,700xg |
| Max. Capacity | 400cc (100cc x 4) |
| Program Memory | 10 |
| Noise Level | ≤52dB |
| Acc / Dec | ≤20sec / ≤25sec |
| Control Panel | Blue LED screen / Pop-up buttons |
| Power Supply | 230V / 50~60Hz (110V Optional) |
| Power Requirement | 340VA, Fuse: 6A |
| Dimension (W x D x H) | 375 x 480 x 260mm |
| Weight (Body + Accessory) | 23kg / 1~2kg |

Function _ Time control, RPM/RCF conversion, Imbalance cutout, Safety lid lock, Lid drop protection, Auto door release at completion, Soft spin mode

Components

Original Edition



15cc Rotor Set



15cc Rotor



15/20cc Bucket (4ea)



10cc Adaptor (4ea)

Special Edition



30cc Rotor Set



30cc Rotor



30/60cc Bucket (4ea)



15/20cc Adaptor (4ea)



10cc Adaptor (4ea)

NEO CENTRIFUGE

“Angle-Type” for simple centrifugation of tubes less than 15ml

- Max capacity: 90ml (15ml x 6)

Compatibility

NEO(10cc) PRP Kit + Conical Tube(15cc)



Rotor Set

100cc Rotor & Bucket(6ea)

Specification

| | |
|----------------------------|----------------------------------|
| Max. RPM/RCF (Fixed Angle) | 4,000rpm / 2,075xg |
| Max. Capacity | 90cc (15cc x 6) |
| Program Memory | 10 |
| Noise Level | ≤52dB |
| Acc / Dec | ≤20sec / ≤25sec |
| Control Panel | Blue LED screen / Pop-up buttons |
| Power Supply | 230V / 50~60Hz (110V Optional) |
| Power Requirement | 140VA, Fuse: 6A |
| Dimension (W x D x H) | 296 x 412 x 206mm |
| Weight | 17.5kg |

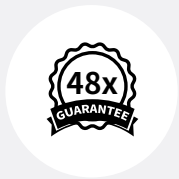
Function _ Time control, RPM/RCF conversion, Imbalance cutout, Safety door lock, Door drop protection, Auto door release at completion

NEOGENESIS PRP KIT SERIES



Simple “Screw-Type” Tube to Extract up to 48 Times Concentrated Platelets

Patented Curved-Neck Design for Maximum Yield without Any Cell Loss



Maximum Yield
Yields consistent result regardless of operator's skill



Sterile System
Contamination free by closed system & sterile tubes



Wide Selection
5 different tube sizes for diverse usage: 10cc to 60cc



Volume Control
Able to control volume of plasma freely as necessary



Angle & Swing
Compatible with general angle/swing type centrifuges

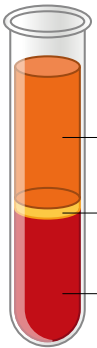
Principle of Platelet Rich Plasma (PRP) Therapy

PRP is a layer of blood that can be separated by centrifugation. PRP can boost tissue healing by providing concentrated platelets to wounded spots directly.

NEOGENESIS PRP KIT is designed for excellent centrifugation and anyone can extract PRP with ease just by pushing the layer upward with a screw controller.

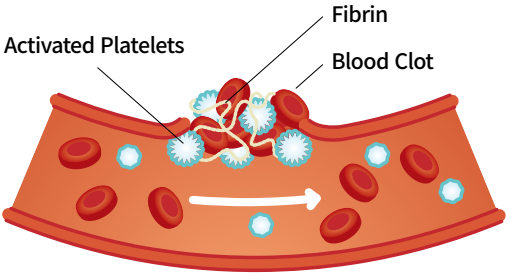


Role of Platelets



Blood components after centrifugation

- 55% Platelet Poor Plasma (PPP)
 - 91% Water
 - 7% Proteins / Fibrin
 - 2% Nutrients / Hormones / Electrolytes
- 1% Platelet Rich Plasma (PRP)
 - Platelets (Growth Factors) / White Blood Cells
- 44% Red Blood Cells (RBC)



Platelets coagulate with fibrin to form a blood clot and heal wounds with its growth factors.

Application Area of PRP



Plastic Surgery / Dermatology



Dentistry



Gynecology



Orthopedics / Rehabilitation Medicine



Hair Loss Prevention



Veterinary

Specification by Model Type



| Model Type | Neo PRP (10cc) | Genesis PRP (15cc) | Pure PRP (20cc) | Cure PRP (30cc) | Omni PRP (60cc) |
|----------------------------|----------------------------|-------------------------|-------------------------|---|---|
| Platelet Concentration | Max. 8 times (1ml PRP) | Max. 13 times (1ml PRP) | Max. 16 times (1ml PRP) | Max. 25 times (1ml PRP) | Max. 48 times (6ml PRP) |
| Compatible Centrifuge | General angle & Swing type | General swing type | General swing type | General centrifuge special edition only | General centrifuge special edition only |
| Compatible Tube | 15cc Conical tube | 50cc Conical tube | 50cc Conical tube | Unique size | Unique size |
| External Dimension (D x H) | 15.2 x 124.8mm | 29.3 x 105mm | 29.3 x 122mm | 30.5 x 118mm | 35.7 x 125.4mm |
| Contents | 10g Kit x 2ea | 28g Kit x 1ea | 28g Kit x 1ea | 43g Kit x 1ea | 45g Kit x 1ea |

PRP ACTIVATOR



The Only “Non-Chemical” Platelet Activator Inspired from Capillary Stress

Double Up the PRP Healing Effect by Stimulating the Growth Factors



No Chemicals

Safe with no adverse effects unlike chemical agonists



Very Effective

As effective as thrombin and much better than CaCl_2



Quick Process

Immediate use after 3 minutes of simple physical action



Less Blood

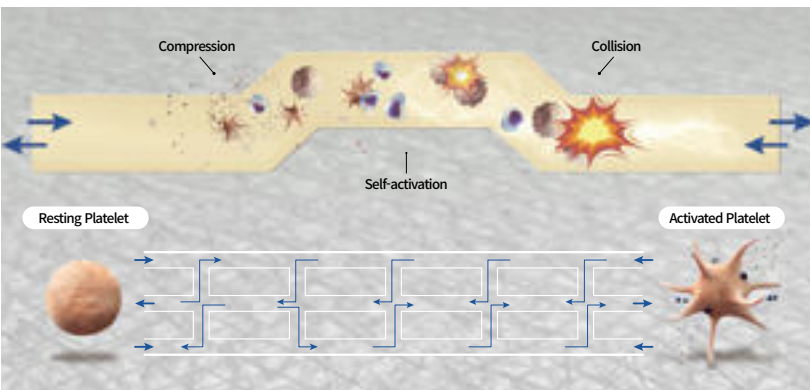
Less blood collection required for the same PRP effect

Principle of Platelet Activation

Platelet activates by reacting to abnormality on vessel wall such as tissue damage, inflammation and cardiovascular disease.

NEOGENESIS PRP ACTIVATOR mimics abnormal environment to activate platelets without any use of chemical agonists.

Physical Activation by Capillary Stress



Forces platelets back and forth through complicated artificial capillary.

Components in Growth Factors

Cytokines & Chemokines / Adhesion Molecules / Platelet Microvesicles / *Growth Factors

***Growth Factors**
TGF- β , bFGF, PDGFA-b, EGF, VEGF, CTGF
Cellular Proliferation, Collagen Production, Hyaluronic Acid Production, Epidermal Cell Growth, Angiogenesis

| | |
|----------------------------|----------------------------|
| Activating Reagent | None (Physical Activation) |
| Activation Time | 3~5min |
| Compatible Syringe | All Lure-lock syringe |
| External Dimension (D x H) | 21 x 72mm |
| Contents | 13g Kit x 2ea |

PLASMA GEL



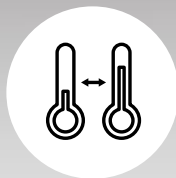
“Compact” Autologous Filler Maker Using Platelet Poor Plasma

Simple One-Button Preparation in just 17 Minutes



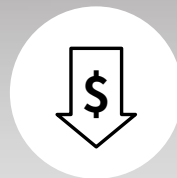
Natural & Safe

The safest natural filler made out of patient's own blood



2-Phase Control

Auto-heat control for optimized gel texture and durability



Cost Saving

Free fillers utilizing the remaining PPP from PRP therapy



Uniform Process

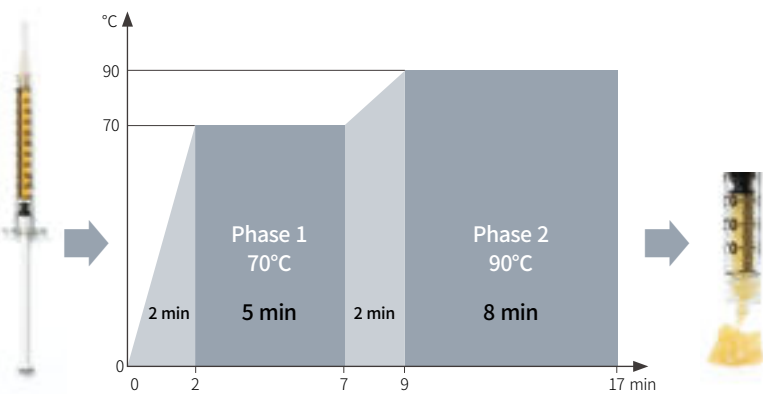
Produces up to 6cc of uniformly textured fillers at once

Principle of Plasma Gel Filler

Plasma proteins such as fibrinogen, albumins, and globulins have properties of emulsification and gelation when they are heated up.

NEOGENESIS PLASMA GEL has optimized temperature settings for 1cc syringes to produce autologous filler with soft and uniform texture.

Auto Temperature Control of Plasma Gel



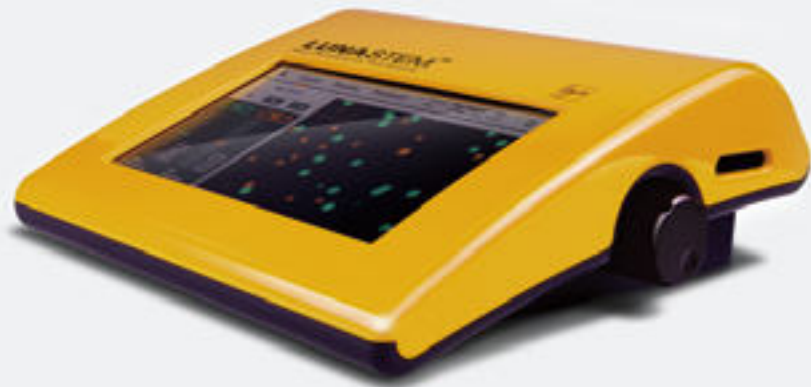
Phase 1 _ The presence of NaCl in plasma accelerates the precipitation of blood proteins.
Phase 2 _ Clotting continues to complete the gel as heat emulsifies the remaining serum.

Specification

| | | |
|-----------------------|--------------------------------|------|
| Max. Capacity | 6cc (1cc x 6) | |
| Lead Time | 0 ~ 70°C Preheating | 2min |
| | 70°C Heating | 5min |
| | 0 ~ 90°C Preheating | 2min |
| | 90°C Heating | 8min |
| | Total 17min | |
| Display | Red LED screen with buttons | |
| Dimension (W x D x H) | 180 x 160 x 148mm | |
| Weight | 1.95kg *Without the AC adaptor | |

Functions _ Current temperature indication, Auto heat control, Alarm at completion, Emergency stop button, Height adjustable cradle

LUNA-STEM



Automated “Dual-Fluorescence” Cell Counter for Stem Cells and SVF

Accurately Distinguish Live & Dead Cells and Non-Nucleated Cells



Smart Software

On-board image overlay, cell gating and viability analysis



Quick Results

Highly sensitive & accurate result within 30 to 60 seconds



CSV & PDF

Auto-generated CSV & PDF data report exportable to USB



PhotonSlide™

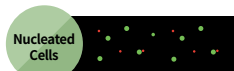
Patented precision-chamber slide for even cell distribution

Dual Fluorescence + Bright Field Optics

Using Acridine Orange(AO) and Propidium Iodide(PI) to stain live and dead cells, respectively, nucleated cells of SVF can be precisely distinguished and counted.

LUNA-STEM can recognize all type of nucleated(stem, genitor, mature) and non-nucleated cells(RBC, micro elements) which is not possible with other cell counters.

Stromal-Vascular Fraction(SVF)

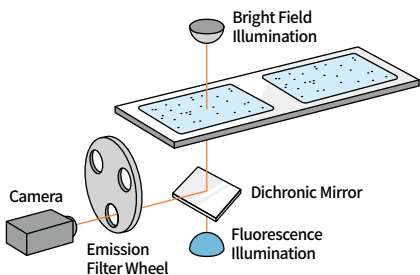


Live cells – AO Positive (Green)
Dead cells – PI Positive (Red)



Cells – AO/PI Negative

Structure of Optical System



Specification

| | |
|--------------------------|--|
| Sample Volume | 10μL |
| Cell Counting Time | 30 ~ 60sec (Depending on sample conditions) |
| Cell Concentration Range | $5 \times 10^4 \sim 2 \times 10^7$ cells/mL (Optimal range) |
| Cell Size Range | 1 ~ 90μm / 5 ~ 60μm |
| Excitation Wavelength | 470 ± 20nm |
| Emission Wavelength | 530 ± 25nm, 600nm (LP) |
| Light Source | LED |
| LCD Display | 7 inches (800×480 pixels) |
| Image Resolution | 5MP |
| Dimensions (W×D×H) | 22×21×9cm |
| Weight | 1.8kg *Without the AC adaptor |

AESTHETICS

Neo Thread Series

Regenovue Filler Series

Regenovue Aqua Shine Series

Regenovue PN Series

Neo Needle Series

Neobella

LeFil Injector

Spotless



NEO THREAD SERIES



“Medical-Grade” Sutures for Lifting, Anti-Wrinkle & Collagen Synthesis

Over 120 Different Models in PDO, PLLA & PCL for Diverse Application



Safe Materials

FDA approved biodegradable materials with EO gas sterilization



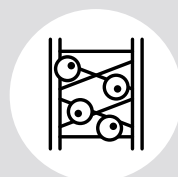
Durable Threads

Unique processing and sealing technique without air exposure



Needle & Cannula

Premium stainless steel with silicon coating for smooth injection



Scaffold Effect

Models available for combination therapy with stem cell & PRP



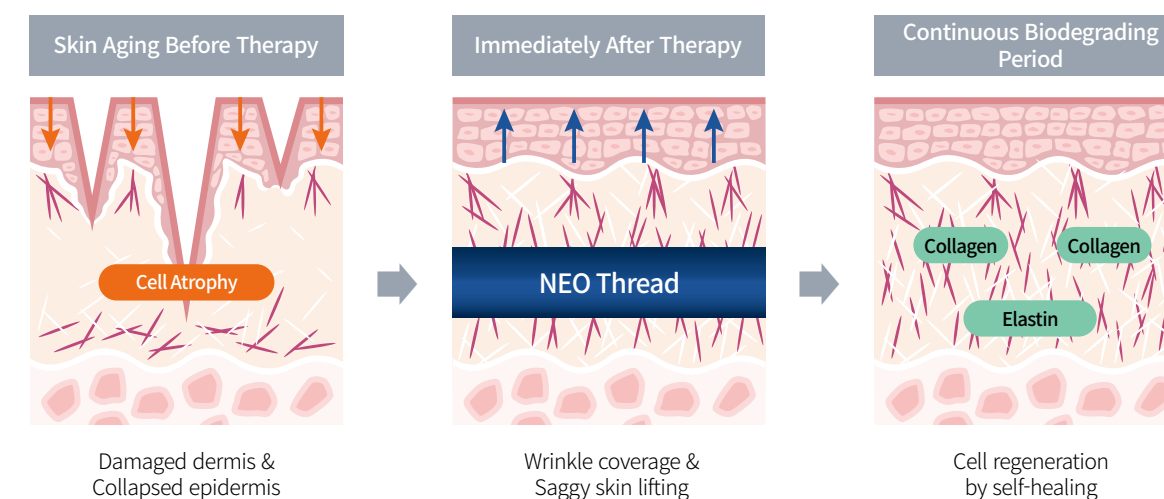
Customization

Customized brand & models available according to your needs

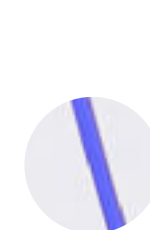
Principle of Thread Lifting

Thread lifting is a non-surgical therapeutic technique with immediate and long-lasting improvement for saggy skin, wrinkles, and skin elasticity.

NEO THREAD SERIES focuses on the quality of raw materials and is delicately handcrafted to provide a pleasant treatment experience without threads snapping.



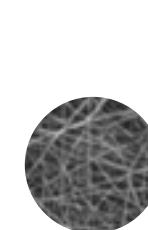
3 Different Materials of Neo Thread



PDO (Polydioxanone)

The “Most Reputed” for Its Safety and Cost-effectiveness

- Over 30 years of safety track record in cardiovascular surgeries
- Universally recognized as the basic material for lifting threads



PLLA (Poly-L-Lactic Acid)

Excellent for “Volume Contouring” and Collagen Generation

- 25% volume increase by production of collagen type 1&3
- Alternative to dermal filler and botulinum toxin treatment



PCL (Polycaprolactone)

“Long-Lasting” Collagen Generator with Natural Skin-like Feeling

- Developed specifically for aesthetic thread lifting purposes
- High tensile strength generates collagen for 24~36 months



100ea / Box
*May Vary by Model Type

Basic Thread (Mono / Screw)

- Fine Wrinkles on Face and Neck
- Cannula models for tender eye area

| Product Name | Needle Size | Needle Length | Thread Length | Model Code |
|---|-------------|---------------|---------------|------------|
| Mono (Single Thread)  | 31G | 12mm | 16mm | M3112 |
| | | 25.4mm | 30mm | M3125 |
| | 30G | 18mm | 30mm | M3018 |
| | | 25.4mm | 30mm | M3025 |
| | | 38mm | 50mm | M3038 |
| | 29G | 25.4mm | 30mm | M2925 |
| | | 38mm | 50mm | M2938 |
| | | 50mm | 70mm | M2950 |
| | | 60mm | 90mm | M2960 |
| | 27G | 38mm | 50mm | M2738 |
| | | 50mm | 70mm | M2750 |
| | | 60mm | 90mm | M2760 |
| | | 90mm | 150mm | M2790 |
| | 26G | 38mm | 50mm | M2638 |
| | | 50mm | 70mm | M2650 |
| | | 60mm | 90mm | M2660 |
| | | 90mm | 150mm | M2690 |
| | 25G | 50mm | 70mm | M2550 |
| | | 60mm | 90mm | M2560 |
| 70mm | | 110mm | M2570 | |
| 90mm | | 150mm | M2590 | |
| 23G | 60mm | 90mm | M2360 | |
| | 90mm | 150mm | M2390 | |
| Screw (Single Thread)  | 31G | 12mm | 16mm | S3112 |
| | | 25.4mm | 30mm | S3125 |
| | 30G | 18mm | 30mm | S3018 |
| | | 25.4mm | 30mm | S3025 |
| | | 38mm | 50mm | S3038 |
| | 29G | 25.4mm | 30mm | S2925 |
| | | 38mm | 50mm | S2938 |
| | | 50mm | 70mm | S2950 |
| | | 60mm | 90mm | S2960 |
| | 27G | 38mm | 50mm | S2738 |
| | | 50mm | 70mm | S2750 |
| | | 60mm | 90mm | S2760 |
| | | 90mm | 150mm | S2790 |
| | 26G | 38mm | 50mm | S2638 |
| | | 50mm | 70mm | S2650 |
| | | 60mm | 90mm | S2660 |
| | | 90mm | 150mm | S2690 |
| | 25G | 50mm | 70mm | S2550 |
| | | 60mm | 90mm | S2560 |
| 70mm | | 110mm | S2570 | |
| 90mm | | 150mm | S2590 | |
| 23G | 60mm | 90mm | S2360 | |
| | 90mm | 150mm | S2390 | |
|  *Eye Cannula (Mono / Screw) | 30G | 25.4mm | 30mm | M3025-C |
| | | 25.4mm | 30mm | S3025-C |
| | 29G | 38mm | 50mm | M2938-C |
| | | 38mm | 50mm | S2938-C |
| 20ea / Pouch *10ea / Pouch | | | | |

Multi Thread (Twin / Triple / Tornado Screw)

- Deep Wrinkles on Face and Neck
- Scaffolding combination therapy with Stem cell & PRP

| Product Name | Needle Size | Needle Length | Thread Length | Model Code |
|--|-------------|---------------|---------------|------------|
| Multi: Twin (Two Stranded Thread)  | 27G | 38mm | 50mm | T2738 |
| | | 50mm | 70mm | T2750 |
| | | 60mm | 90mm | T2760 |
| | 26G | 38mm | 50mm | T2638 |
| | | 50mm | 70mm | T2650 |
| | | 60mm | 90mm | T2660 |
| | | 90mm | 150mm | T2690 |
| | 25G | 60mm | 90mm | T2560 |
| | | 90mm | 150mm | T2590 |
| Multi: Triple (Three Stranded Thread)  | 26G | 38mm | 50mm | TR2638 |
| | | 50mm | 70mm | TR2650 |
| | | 60mm | 90mm | TR2660 |
| | 25G | 90mm | 150mm | TR2690 |
| | | 60mm | 90mm | TR2560 |
| | | 90mm | 150mm | TR2590 |
| | 23G | 60mm | 90mm | TR2360 |
| | | 90mm | 150mm | TR2390 |
| Multi: Tornado Screw (Two Screw Thread)  | 27G | 50mm | 70mm | TS2750 |
| | 26G | 38mm | 50mm | TS2638 |
| | | 50mm | 70mm | TS2650 |
| | | 60mm | 90mm | TS2660 |
| | | 90mm | 150mm | TS2690 |
| | 25G | 60mm | 90mm | TS2560 |
| | | 90mm | 150mm | TS2590 |
| | 23G | 60mm | 90mm | TS2360 |
| 20ea / Pouch | | | | |

Cog Thread (Cog / Nose / Molding)

- Saggy Face, Double Chin and Body Contour
- Powerful lifting with 360° Bi-directional cogs



Combi Thread (Combi / Double Needle)

- Saggy Face, Double Chin and Body Contour
- Delicate touch with 360° Multi-directional cog



Special Thread (Cavern / Thread Filler / Mesh)

- Volume and Collagen Synthesis for Deep Wrinkles
- Superb scaffolding effect for cell & filler combination therapy



| Product Name | Needle Size | Needle Length | Thread Length | Model Code |
|---|-------------|---------------|---------------|------------|
| Cog Thread (360°-Bi) | 19G | 70mm | 110mm | C1970 |
| | | 100mm | 140mm | C19100 |
| Cog U-Cannula (360°-Bi) | 19G | 70mm | 110mm | C1970-C |
| | | 100mm | 140mm | C19100-C |
| Cog U-Cannula (Bi-Directional) | 19G | 100mm | 140mm | C19100B-C |
| Cog W-Cannula (Bi-Directional) | 18G | 100mm | 140mm | C18100B-C |
| *Nose Cog L-Cannula (One-Directional) | 19G | 38mm | 50mm | C1938-C |
| | | 50mm | 80mm | C1950-C |
| *Molding Cog W-Cannula (Arrow-Bi) | 19G | 100mm | 150mm | C19100M-C |
| | 18G | 100mm | 150mm | C18100M-C |

20ea / Pouch *10ea / Pouch

| Product Name | Needle Size | Needle Length | Thread Length | Model Code |
|--|-------------|---------------|---------------|------------|
| Combi Thread (360°-Multi) | 23G | 38mm | 50mm | B2338 |
| | | 50mm | 70mm | B2350 |
| | | 60mm | 90mm | B2360 |
| | | 90mm | 150mm | B2390 |
| | 21G | 60mm | 90mm | B2160 |
| | | 90mm | 150mm | B2190 |
| Combi U-Cannula (360°-Multi) | 23G | 38mm | 50mm | B2338-C |
| | | 60mm | 90mm | B2360-C |
| | | 90mm | 150mm | B2390-C |
| | 21G | 60mm | 90mm | B2160-C |
| | | 90mm | 150mm | B2190-C |
| | 19G | 110mm | 290mm | D19110S |
| | | 110mm | 440mm | D19110L |

20ea / Pouch *1ea / Pouch

| Product Name | Needle Size | Needle Length | Thread Length | Model Code |
|--|-------------|---------------|---------------|---------------|
| Cavern Thread L-Cannula (Coil Spring) | 29G | 50mm | 320mm | V2950-C |
| | 27G | 50mm | 310mm | V2750-C |
| | 25G | 50mm | 410mm | V2550-C |
| | 23G | 60mm | 550mm | V2360-C (5-0) |
| | | 60mm | 450mm | V2360-C (4-0) |
| | 21G | 60mm | 440mm | V2160-C (4-0) |
| | | 60mm | 380mm | V2160-C (3-0) |
| | 23G | 38mm | 50mm | TF2338-C |
| Thread Filler L-Cannula (Multi Strand) | 23G | 60mm | 90mm | TF2360-C |
| | | 60mm | 90mm | TF2360-C |
| Mesh Cog L-Cannula (Mesh-Structured) | 19G | 38mm | 50mm | MS1938-C |
| | | 50mm | 60mm | MS1950-C |

10ea / Pouch

REGENOVUE FILLER SERIES



100% Fully Cross-linked “Monophasic” HA Filler with High Safety Level
Impressive Homogeneous Structure Grants Exquisite Volume Contouring

Full Cross-link
Special physical method enables full cross-linking with less BDDE

No Toxin Left
Less than 0.0015IU/mg endotoxin & no BDDE residue detected

Lasting Elasticity
Long-lasting volume by 45% higher elasticity than its competitors

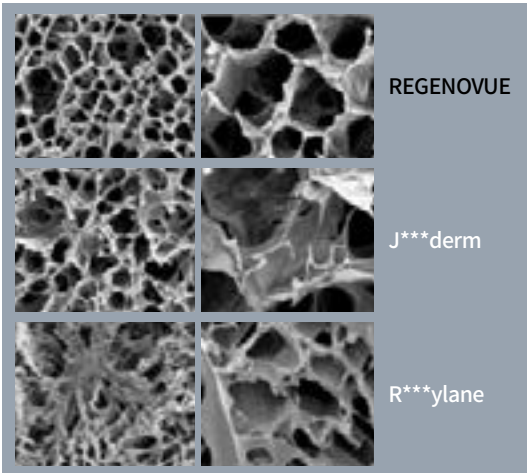
Powerful Viscosity
31% higher viscosity for powerful volume with no filler migration

Steady Injection
Steady extrusion force allows comfortable and stable treatment

Cross-linked Structure of REGENOVUE

Depending on the crosslinking technique, HA fillers can be a substance that is both liquid and gel.

REGENOVUE is a completely gelled filler with a uniform structure, for excellent volumizing effects and precise contouring.



REGENOVUE’s structure is far more regular and compact than the competitors.

REGENOVUE FINE / DEEP / SUB-Q

“Facial” fillers with three different gel-thicknesses for various applications

- REGENOVUE [PLUS] versions include lidocaine for extra comforting treatment



| Product Name | REGENOVUE Fine / Fine [Plus] | REGENOVUE Deep / Deep [Plus] | REGENOVUE Sub-Q / Sub-Q [Plus] |
|-----------------|---|--|--|
| Main Ingredient | Cross-linked HA 24mg/ml + Lidocaine 0.1ml (Plus model only) | | |
| Application | Superficial wrinkles, periorbital & glabellar lines, neck folds | Middle/deep wrinkles, nasolabial folds, lips & chin & forehead contour | Deep wrinkles, lips & nose contour |
| Duration | 8~12 months | 12~18 months | |
| Contents | 1 syringe (1.0ml/1.1ml) & 1 x 30G, 1 x 27G needles | 1 syringe (1.0ml/1.1ml) & 2 x 27G needles | 1 syringe (1.0ml/1.1ml) & 1 x 27G, 1 x 25G needles |
| CE | All models CE certified | | |

REGENOVUE GLAM

REGENOVUE filler specially designed for “Body” contouring & augmentation

- Optimized volume & duration for reshaping breasts, hips, buttocks and calves

| | |
|-----------------|---------------------------------|
| Main Ingredient | Cross-linked HA 24mg/ml |
| Application | Breasts, buttocks, hips, calves |
| Duration | 24 months |
| Contents | 10ml syringe x 1ea |

*High elasticity for long lasting duration 'Up to 24 months'



REGENOVUE AQUA SHINE SERIES



Intensive Hydration Booster with the “Purest Quality” Hyaluronic Acid

Experience Superior Elasticity & Radiant Skin Tone within A Week



Non-Animal HA
Non-animal based HA with less than 0.0015IU/mg endotoxin



Micro Particle
Micro-fine HA particles enable even spread into deep dermis



Longer Duration
Cross-link technique for twice the duration of its competitors



Body Friendly
Applies well by similar pH & osmosis level to human body



Quick Recovery
15 minute treatment & minimal damage for one day recovery

Purest form of Hyaluronic Acid(HA)

HA is a natural human body substance, which decreases as aging progresses, that can trap water inside tissue cell up to 1000 times its weight.

REGENOVUE AQUA SHINE supplies high purity HA concentrate directly into the skin to improve skin elasticity immediately and prevent aging sign.

HA Particle Comparison



Effects of HA



Specification



| Product Name | Regenovue Aqua Shine | Regenovue Aqua Shine [Plus] |
|--------------------|--|-----------------------------|
| Main Ingredient | Hyaluronic Acid 15mg/ml | |
| Cross-link | Non Cross-linked | Partially Cross-linked |
| Injection Depth | Upper/Mid dermis | Mid/Deep dermis |
| Treatment Interval | 3 times for 4 weeks | 3 times for 8 weeks |
| | *Adjust the number of treatment according to the patient's condition | |
| Duration | 3~5 months | 6~8 months |
| Contents | 3ml syringe x 3ea & hand piece x 1ea | |

REGENOVUE PN SERIES



“Advanced” Salmon DNA Skin Booster for Fundamental Cell Regeneration

Achieve All Advantages of Botox, Filler & Mesotherapy with One Formula



Biocompatible

Safe and effective with 94% biocompatibility with human DNA



Thicker Skin

Clinical result of skin matrix reformation up to 52% thicker skin



Unique Formula

PN & HA formula for a strong timed-release regeneration effect



Fine Particles

Homogeneous fine particles suitable for deep dermis injection



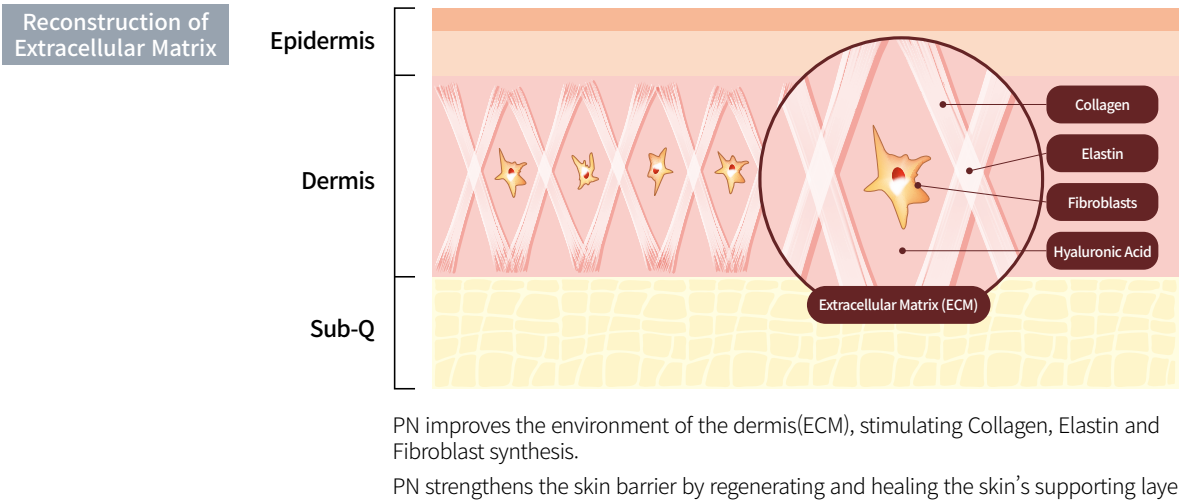
No Skin Damage

As effective as laser lifting without skin inflammation & damage

PN, The Advanced PDRN

Polynucleotide(PN), extracted from salmon, has a higher molecular weight, concentration, and DNA chain value than PDRN that it shows much better skin regeneration effect.

REGENOVUE PN, by its unique formula with Hyaluronic Acid(HA), also has a much better absorption and duration rate than conventional PDRN products.



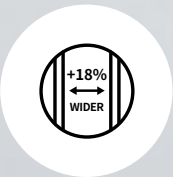
| Product Name | Regenovue PN | Regenovue PN [Plus] |
|--------------------|--|------------------------|
| Main Ingredient | HA 20mg + PN 5mg | HA 15mg + PN 5mg |
| Cross-link | Non Cross-linked | Partially Cross-linked |
| Injection Depth | Upper/Mid dermis | Mid/Deep dermis |
| Treatment Interval | 3 times for 4 weeks | 3 times for 8 weeks |
| | *Adjust the number of treatment according to the patient's condition | |
| Duration | 3~5 months | 6~8 months |
| Contents | 3ml syringe & hand piece x 1ea | |

NEO NEEDLE SERIES



“Sterilized” Hypodermic Needle & Cannula for All Aesthetic & Clinical Uses

Extensive Line Up Over 35 Models with Different Lengths & Thicknesses



Fluent Flow

Ultra-thin wall & wide inner diameter for smooth flow of fluids



Smooth Surface

Burr-free cutting point with polished & silicon coated surface



Medical Safety

Medical grade propylene & stainless steel with EO sterilization



Compliant Design

Shape, size & color designed to comply with the ISO guidelines

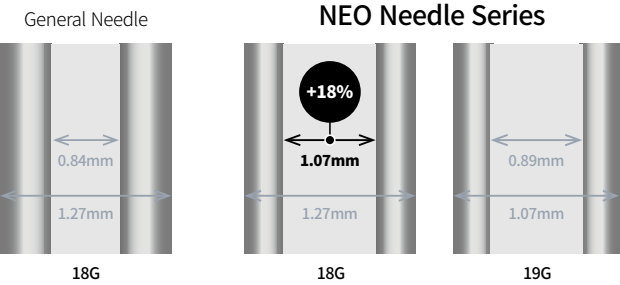
Aesthetics

Up to 18% Wider Inner Diameter

Since product solutions enter the skin using needles, it is very important to consider the needle's size, quality, and safety.

NEOGENESIS NEEDLE & CANNULA have a smooth surface and a large inner diameter to provide smooth infusion without damaging the skin tissue.

Inner Diameter Comparison



Larger inner diameter compared to other products of same specification

NEO FILLER CANNULA

Premium “Blunt-Tip” needle for accurate filler injection & fat grafting

- No intravascular injection with minimal vein damage & bruising
- Fewer entry points for multiple injections allow less skin damage



Specification

NEO Filler Cannula

| Needle Size | Needle Length | Model Code |
|-------------|---------------|------------|
| 30G | 25mm | FC3025 |
| | 30mm | FC3030 |
| 27G | 30mm | FC2730 |
| | 40mm | FC2740 |
| | 50mm | FC2750 |
| 25G | 40mm | FC2540 |
| | 50mm | FC2550 |
| | 70mm | FC2570 |
| 24G | 50mm | FC2450 |
| | 30mm | FC2330 |
| 23G | 50mm | FC2350 |
| | 70mm | FC2370 |
| 22G | 50mm | FC2250 |
| | 50mm | FC2150 |
| 21G | 50mm | FC2150 |
| | 70mm | FC2170 |

NEO Filler Cannula (Fat Graft)

| Needle Size | Needle Length | Model Code |
|-------------|---------------|------------|
| 20G | 50mm | FC2050 |
| | 70mm | FC2070 |
| 19G | 50mm | FC1950 |
| | 70mm | FC1970 |
| 18G | 50mm | FC1850 |
| | 70mm | FC1870 |
| 17G | 70mm | FC1770 |

NEO Filler Cannula (Breast Cannula)

| | | |
|-----|-------|---------|
| 17G | 100mm | FC17100 |
| | 120mm | FC17120 |
| | 150mm | FC17150 |
| 14G | 100mm | FC14100 |
| | 150mm | FC14150 |
| | 200mm | FC14200 |

20ea / Box *Scaled dot-marking cannula available for extra precision

NEO NANO NEEDLE

Exquisite “Micro” needle for mesotherapy, botox & local anesthetics

- Smooth & gentle penetration with less pain, bleeding or swelling



Specification

NEO Nano Needle

| Needle Size | Needle Length | Model Code |
|-------------|---------------|------------|
| 34G | 4mm | NN3404 |
| | 6mm | NN3406 |
| 33G | 4mm | NN3304 |
| | 6mm | NN3306 |
| | 13mm | NN3313 |
| 30G | 4mm | NN3004 |
| | 13mm | NN3013 |

100ea / Box

NEOBELLA



Fat-Dissolving solution with FDA Approved “Deoxycholic Acid” for Face & Body

Noticeable Result in Just a Few Weeks without Pain & Adverse Reaction



Non-Surgical

Safety proven injectable to decrease severe localized obesity



No Side Effects

No swelling, redness, hematoma, nerve damage or paralysis



Speedy Result

Only 4~7 day interval between treatments with a rapid onset



Double Action

Permanent effect with Lipolysis & Hypotonic Lipo-dissolution



Broad Application

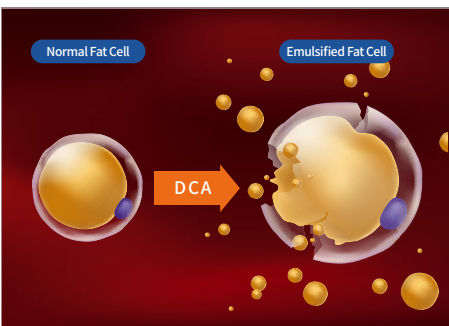
Suitable for all area: face, chin, abs, arms, thighs, hips and etc.

Unique Deoxycholic Acid(DCA) Formulation

DCA is a natural substance found in our body that breaks down fats in our diets and is the only fat-dissolving injectable certified by FDA.

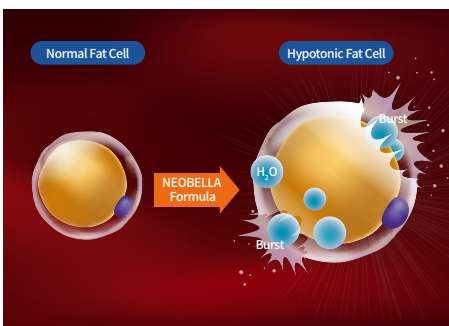
NEOBELLA’s DCA formula is notable for its significantly reduced side effects compared to competitors’, safe enough for consecutive treatments to achieve rapid transformation.

Double Fat Destruction by NEOBELLA’s Unique DCA Formula



1. Fat degradation caused by emulsification

Deoxycholic Acid destroys the cell membrane of fat for emulsification and degradation of fats.



2. Fat dissolution via moisture overload

Moisture absorbed by osmotic pressure difference expands and ruptures adipose cells.

Specification

| | |
|--------------------|--|
| Main Ingredient | Deoxycholic Acid 5mg/ml |
| Injection Depth | Subcutaneous fat layer |
| Treatment Interval | 1 vial for 5~6 treatments (4~7 days apart) *Inject all over the area of local obesity with 1~1.5 inch intervals |
| Duration | Permanent effect |
| Contents | 8ml vial x 5ea |

LEFIL INJECTOR



“Compact” Wireless Device Compatible with All Syringes and Solutions

Precise Control with Micro-Adjustable Volume, Dosage, Speed & Viscosity



Fast & Precise

9-pin needle spreads constant dosage evenly at regular intervals



Stable Injection

Auto-reverse plunger & stable suction prevent solution leakage



Auto-Mode

Manual and continuous injection modes for user convenience



LCD Screen

Ergonomic design with intuitive 16 inch LCD control panel



Operation Time

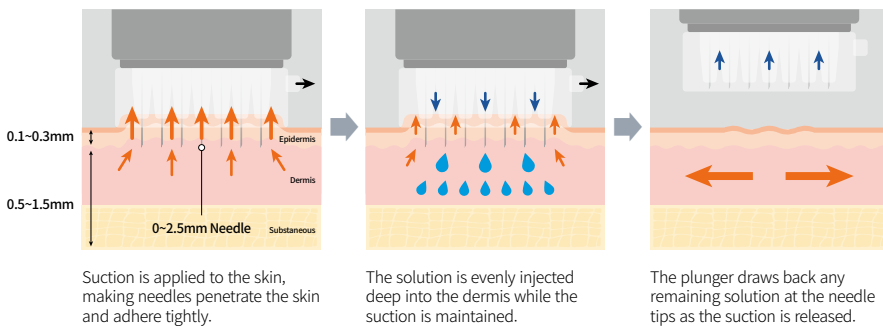
Rechargeable battery for 90min of operation on a single charge

‘Swiss-Made’ Motor for Leakless Injection

Mesotherapy injectors are very efficient compared to needles; however, their performance is highly dependent on the pump motor.

LEFIL INJECTOR uses a reliable ‘Swiss-made’ motor for the pump module and auto-reverse plunger holder, allowing precise control and stable injection performance.

Mechanism of LEFIL



*LEFIL’s pump also sucks up any solution leaked from misuse, leaving the needle clean and ready for the next shot.

Specification & Consumables

| | |
|---------------------------|---|
| Battery | Rechargeable lithium-ion (7.4V D.C 1150mAh) |
| Max. Capacity | Up to 5cc syringes (Any type) |
| Display | Graphic LCD 1.6 inch |
| Power Supply | 100~240V / 50~60Hz, 1.5A |
| Dimension (W x D x H) | 210 x 70 x 180mm |
| Weight (Body / Accessory) | 395g / 155g |
| Contents | Main device, Adaptor, Battery, Pump (Module 2ea + Hose 3ea) |

*Consumables 5-Pin Needle, 9-Pin Needle (Depth adjustable: 0~2.5mm)
Function _ Auto-injection, Speed/dosage/viscosity control

SPOTLESS



“Multi-Purpose” Plasma Pen for Blemish Removal & Skin Tightening

Safely Vaporizes Skin Cells without Contact, Incision, Scarring & Bleeding



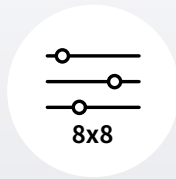
Simple Use

Intuitive control buttons and usage without complicated skills



Stable Energy

Delivers high output of 24V & stable wavelength up to 60Hz



Fine Control

8 levels of power & frequency control for 64 combinations



Various Effects

Wide application with regular, fine, flat & fractional type tips



Cost-effective

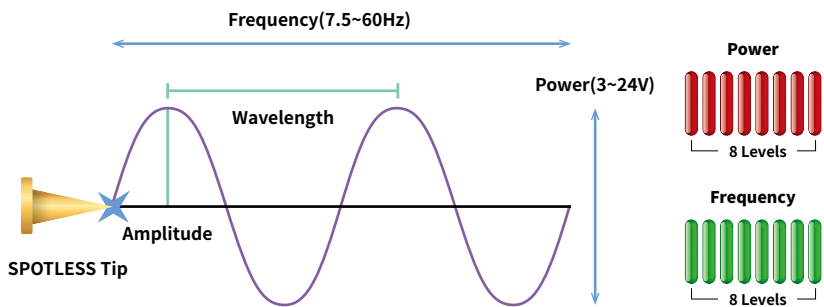
A semi-permanent device as effective as large laser machines

Untact removal with Plasma Energy

Radio-frequency discharges plasma arc to vaporize cells without contact, stimulating fibroblast to promote collagen synthesis and skin regeneration.

SPOTLESS is equipped with 4 different tips and 64 levels of energy control for extra delicacy in treating all types of skin spots, wrinkles, and large pores.

Mechanism of SPOTLESS



Power _ Controls the amplitude of the wave **Frequency** _ Controls how often the wave will be emitted
Plasma energy is generated when the trigger tip is in proximity to a conductor, such as a human body.

Specification & Consumables

| | |
|---------------------------|--|
| Application | Mole, Freckle, Wart, Skin tag, Milium, Syringoma, etc. |
| Power Supply | 110~240V / 60Hz, 0.5A |
| Voltage Rating | DC 24V, 1A |
| Dimension (W x D x H) | 170 x 35 x 15mm |
| Weight (Body + Accessory) | 53g |
| Contents | Main device, Adaptor, Tip (2 Regular + 1 Fine) |

*Consumables Regular / Fine / Flat / Fractional Tip
Function _ Power & Frequency control (8 levels)

PHARMACEUTICALS

Neo Anesthetic Cream Series

Neotox



NEO ANESTHETIC CREAM SERIES



“Genuine-Quality” Topical Anesthetic Creams for Numbing Targeted Areas

A Safe and Efficient Way to Temporarily Stop Pain Signals without Injection



Simple Use

Easy to achieve powerful anesthesia without special skill or tools



Non-irritant

Safe with internationally commercialized ingredient composition



Pleasant Texture

Pleasant use with odor-free, non-sticky & water-soluble formula



Stable Form

Strong thermal resistance technique preventing phase separation



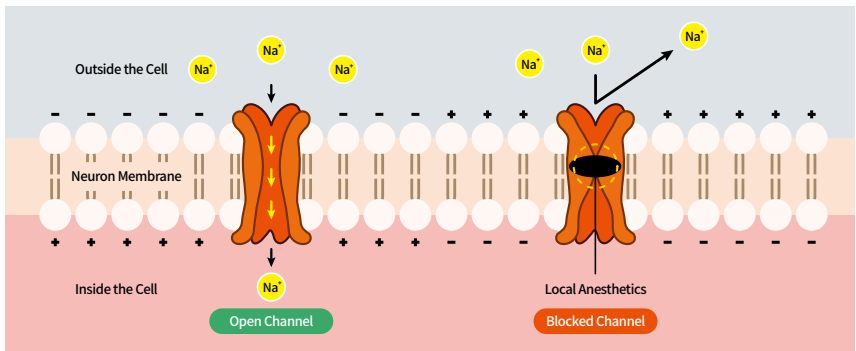
Safe Quality

‘Made in Korea’ product strictly complying with GMP guidelines

Safe Action of Local Anesthetics

Local anesthetics physically block sodium channels of the neuron membrane which transiently stop nerves from signaling sensation to the brain.

NEO ANESTHETIC CREAM SERIES assure safe quality with international standards and have no risk of side effects encountered from products with excessive content and counterfeits.



Local anesthetics prevent depolarization of a nerve to temporarily stop impulse conduction.

Application Area



Dermatology



Urology



Surgery



Aesthetic



Tattoo

NEO-CAIN CREAM

The most widely known “Lidocaine 10.56%” for powerful & quick effect

- Genuine product with ICS verification code cutting off counterfeit risks

| | |
|------------------|---|
| Main Ingredient | Lidocaine 105.6mg/g |
| Appearance | Yellowish-white cream |
| Duration | More than 45min (Apply more than 15min) |
| Container Type | 500g Jar, 30g Tube |
| User Instruction | Apply on desired area with occlusive dressing (Application & duration may differ by treatment and patient’s condition) |



NEO-PRO CREAM

Fine emulsion of “5% Lidocaine-Prilocaine” for safer & stronger effect

- Notable safety of low cardio & neuro toxicity with rapid toxin excretion
- Remarkable dermal protection without irritation even for sensitive skin

| | |
|------------------|---|
| Main Ingredient | Lidocaine 25mg/g + Prilocaine 25mg/g |
| Appearance | White cream |
| Duration | More than 90min (Apply more than 45min) |
| Container Type | 450g Jar, 30g Tube |
| User Instruction | Apply on desired area with occlusive dressing (Application & duration may differ by treatment and patient’s condition) |



NEOTOX



Botulinum Toxin Type A with “99.8%” High Purity for Fast and Stable Onset

Shows Constant Effect for Repeated Treatments without Building Tolerance



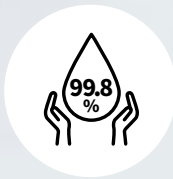
Original Strain

Commercialized Genuine Hall A from European National Institute



Certified Safety

Manufactured in cGMP facility to comply with FDA & EMA safety



Fast Activation

Patented vacuum-drying preserves 99.8% purity for a quick effect



Low Tolerance

Low immunogenicity by up to 61% less protein than competitors



No Discomfort

No injection pain & irritation after treatment with ideal pH of 6.7

Patented Vacuum-Drying

Vacuum-drying, which is completed within 2 hours, has much less possibility of neurotoxin deterioration compared to 20 hours or more of freeze-drying.

NEOTOX uses a patented technology that shows exceptional purity compared to conventional products and gives you a quick satisfying result with less injection required.



Stability Comparison by Drying Method

| Comparison | Freeze-drying | Vacuum-drying |
|---------------------|--|---|
| Procedure Duration | More than 20 hours (High deterioration possibility) | Less than 2 hours (Low deterioration possibility) |
| Neurotoxin Toxicity | High loss | High preservation |
| Biological Activity | Low activity | High activity/effect |
| Protein Impurity | High content | Low content/tolerance |

NEOTOX is engineered by patented vacuum-drying technique.

Specification

| | | | |
|-----------------|------------------------------------|----------|----------------------|
| Main Ingredient | Clostridium botulinum toxin type A | | |
| Appearance | Vacuum-dried | Storage | Refrigerate at 2~8°C |
| pH Level | pH 6.7 | Contents | 100U vial x 1ea |

COSMETICS

Beta-Glucan Recovery Series

Riox Mask



BETA-GLUCAN RECOVERY SERIES



“Post-Therapy” Care for Soothing Irritated Skin with Natural Mushroom Extract

Promotes Cell Recovery with a 20% Stronger Moisturizing Effect Than HA



Natural Source

Split-gill mushroom beta-glucans refined to suit all skin types



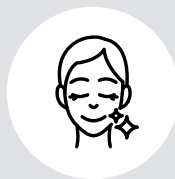
Toxin Excretion

Intense hydration speeds the excretion of anesthetics & wastes



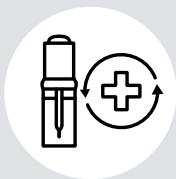
Anti-Inflammation

Deep cooling prevents inflammation & soothes stimulated skin



Rejuvenation

High synthesis of collagen & antioxidants to promote skin repair



Medical Effect

Improves skin immunity, burn marks, scalp psoriasis & hair loss

Superior Split-gill Mushroom Beta-Glucan

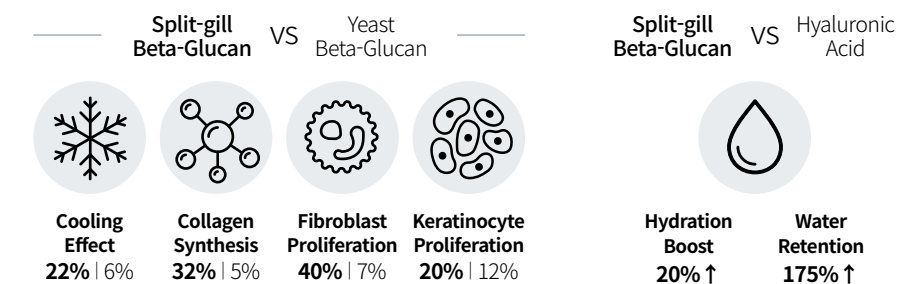
β -glucan is from polysaccharides of bacteria, fungi, yeast, and cereals but its skin healing and immunizing properties differ significantly depending on the source

NEOGENESIS BETA-GLUCAN SERIES uses top-quality β -glucan from *Schizophyllum commune* which is renowned for its medicinal value higher than any other glucan complex carbohydrate.



Advantages of Schizophyllum β -Glucans

Schizophyllum β -Glucans show an unrivaled profile for immunomodulatory, antifungal, antineoplastic, and antiviral activities.



BETA MASK

Hydrogel scaffold mask optimized for “Post-Mesotherapy Use”

- Allows excellent adhesion without irritation on exposed skin.
- The super absorbent sheet keeps the essence more condensed.

Natural Extracts _ Split-gill mushroom beta-glucans & 9 herbs

Contents _ 28g mask x 10ea *Two-piece (Top & Bottom)



BETA SERUM

Multifunctional serum with a dropper for “Convenient Daily Use”

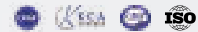
- Highly enriched serum for oil-water balance and skin troubles.
- Applicable for various symptoms on the face, head, and body.

Natural Extracts _ Split-gill mushroom beta-glucans

Contents _ 15ml vial x 3ea



RIOX MASK



Patented “CO₂ Mask” Implementing Carboxy Therapy without Injection

Get a Slim Face Line, Healthy Skin & Clear Complexion with a Skin Detox



Herbal Extracts

Natural ingredients supply vitamins to restore vitality & radiance



Dermis Detox

Releases O₂ to stimulate skin metabolism & clear out impurities



Fat Breakdown

Speeds up fat burning & tightens pores to reduce sagging skin



Max Efficiency

Reduced cost, pain, and time compared to conventional carboxy



Hygienic Use

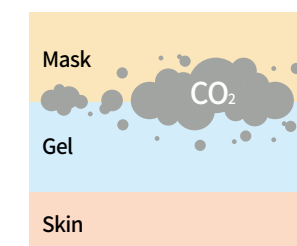
Easy-to-use individual gel syringes for full face & neck coverage

Carboxy Therapy and Bohr Effect

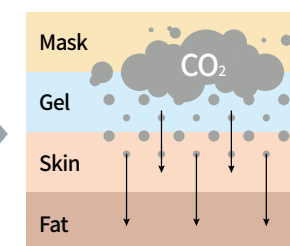
Carboxy therapy is done by injecting carbon dioxide into the skin to treat ailments that stem from poor blood circulation such as cellulite, dark circles, and stretch marks.

RIOX MASK's patented technique successfully replicates the Bohr effect that occurs during carboxy therapy, providing Rich OXYgen to the skin without injection.

Mechanism of RIOX

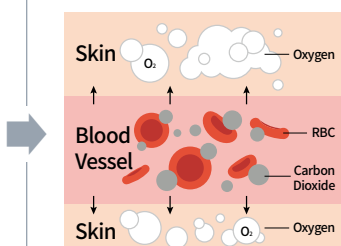


CO₂ is generated by contact between the gel and the mask.

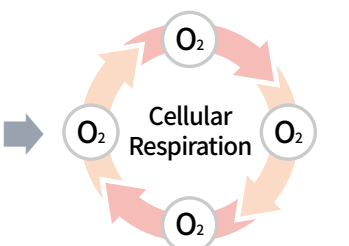


CO₂ is delivered deep into the dermis and subcutaneous fat.

Bohr Effect



CO₂ decreases blood pH and provokes hemoglobin to release O₂.

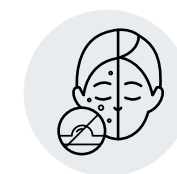


O₂ is supplied to cells that need it the most, boosting metabolism.

Skin's Metabolic process

Blood Circulation → Nutrient Delivery → Energy Conversion → Toxin Removal → Fat Breakdown → Waste Excretion

Effects of RIOX



Clear Out Acne & Pigmentation



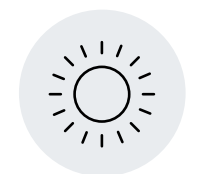
Even Tone & Reduce Dark Circle



Break Down Fat & Tighten Pore



Remove Cellulite & Stretch Mark



Improve Radiance & Complexion



Natural Extracts _ 13 ingredients
Glycyrrhiza Glabra, Eucalyptus Globulus, Pinus Densiflora, Quercus Acutissima, Angelica Gigas, Cnidium Officinale, Angelica Dahurica, Angelica Tenuissima, Chrysanthemum Morifolium, Rosa Centifolia, Rosa Rugosa, Sophora Japonica, Lonicera Japonica

Contents

- 25g gel syringes x 5ea
- Face & Neck mask sheet x 5 sets